



Warranty Program

Congratulations on your decision to install the world's finest high performance, high efficiency shower. It is likely to be the last shower fixture you will ever have to buy! ETL is pleased to provide you with the ultimate product warranty.

NEED HELP? CALL CUSTOMER SERVICE!

If you are missing parts or have questions about the product you purchased, please do not return to this item to the store where it was purchased. Please call 1-866-440-9257 or 775-398-7680 for customer service assistance, business hours are Monday through Friday 7:30 AM to 4:30 PM (PST).

LIMITED LIFETIME PERFORMANCE WARRANTY

Oxygenics showerheads are lifetime warranted never to clog or fail to operate properly. In the event of clogging or failure ETL will, at its election, repair, replace or make appropriate adjustment where ETL inspection discloses any defects occurring in normal usage. Defects or damage caused by use of other than genuine ETL parts are not covered by this warranty.

CONDITIONS

This warranty does not cover loss or damage of any kind resulting directly or indirectly from alteration, misuse or abuse of the product, or from its installation or removal (including scratching). ETL's liability under this warranty shall not in any case exceed the contract price for the product. ETL reserves the right to make changes and improvements in its products without incurring any obligation to similarly alter products previously purchased. WARRANTY SHALL NOT EXTEND TO INCIDENTAL OR CONSEQUENTIAL DAMAGES INCURRED AS A CONSEQUENCE TO ANY DEFECTS COVERED BY THIS WARRANTY, nor shall it apply to normal wear and tear, or when misuse, negligence, or accident are evident. This warranty is in lieu of all other warranties, express or implied. No one is authorized to assume any other liability for ETL in connection with this product. This warranty gives you specific rights. You may have other rights under state law. Warranty is only valid within the U.S.

ONLINE AUCTION PURCHASES

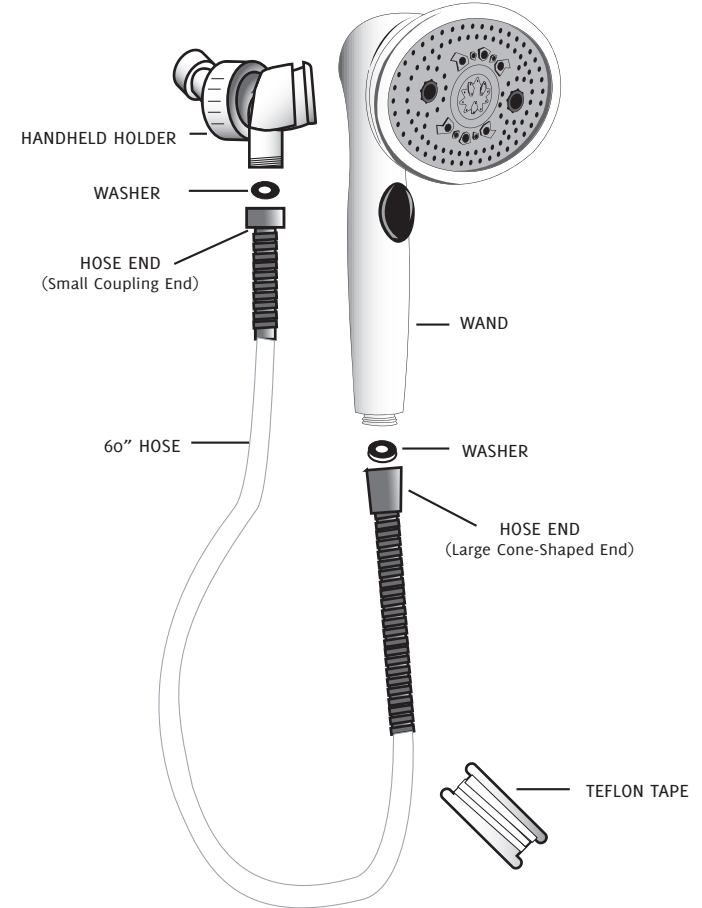
Products sold through online auctions are not eligible for rebates or other special offers from ETL. Online auction confirmations are not accepted for warranty verification. To obtain warranty service, an original or copy of the sales receipt from the original retailer is required. ETL will not replace missing components from any package purchased through an online auction.

See Reverse Side for Installation Instructions

ETL®
976 United Circle
Sparks, NV 89431
P: 1-866-440-9257 or 775-398-7680
www.oxygenics.com



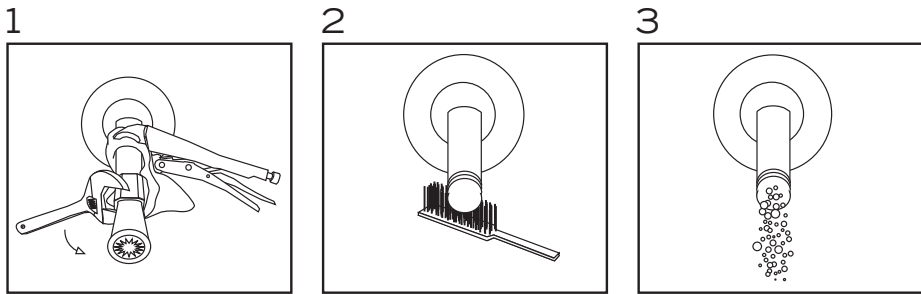
Oxygenics Evolution® Handheld



BECAUSE OF CONTINUING IMPROVEMENTS, ACTUAL PRODUCT AND INSTALLATION MAY DIFFER FROM PHOTOS.

NEED HELP? CALL CUSTOMER SERVICE!

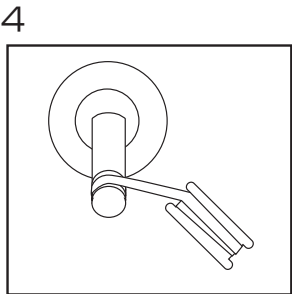
If you are missing parts or have questions about the product you purchased, please do not return to this item to the store where it was purchased. Please call 1-866-440-9257 or 775-398-7680 for customer service assistance, business hours are Monday through Friday 7:30 AM to 4:30 PM (PST).



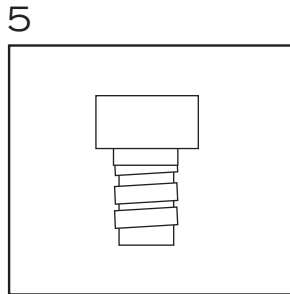
1 Remove existing showerhead.

2 Using a wire brush or steel wool, thoroughly clean threaded area of existing shower arm.

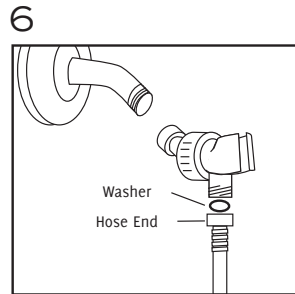
3 Flush out shower pipe for 5 to 10 seconds.



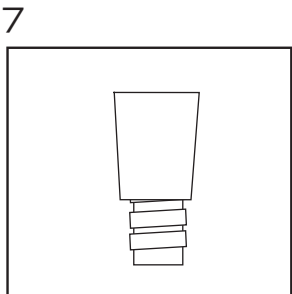
4 Wrap Teflon tape clockwise 3 turns around threaded end of shower arm.



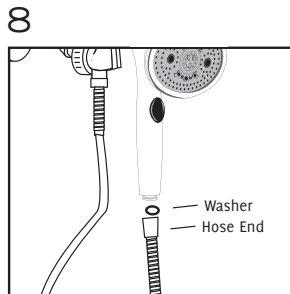
5 Locate the end of the hose that looks like the picture above.



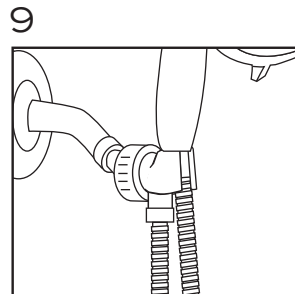
6 In a clockwise direction, screw handheld holder onto the taped portion of shower arm. If washer is not in hose, place washer in hose end and screw onto holder.



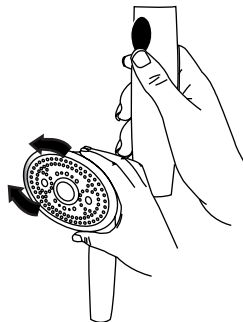
7 Locate the end of the hose that looks like the picture above. This end is longer and tapered.



8 Place a washer into hose end and screw onto handheld wand. If washer is not in hose, place washer in hose end and screw onto holder.



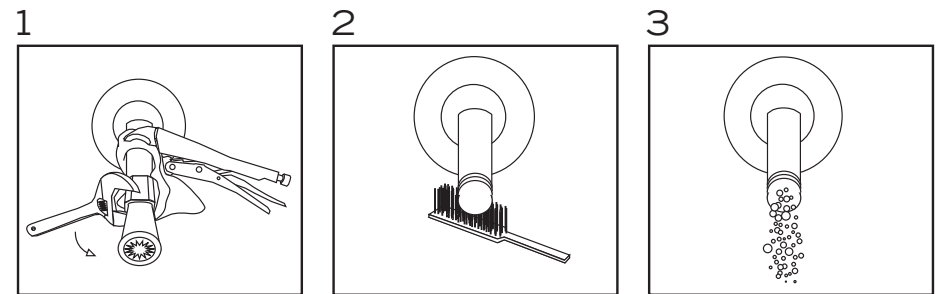
9 Insert handheld shower fixture into handheld holder.



Easy Spray Selection and Adjustable Face

Enjoying different sprays during your shower is quick and simple with the Oxygenics Evolution's click button. Simply click the button on the handle for a quick spray change. Switch between the large core or mini cores for the ultimate Oxygenics showering experience. The Oxygenics Evolution also offers a 360° adjustable face that allows you to twist the face to any angle you like.

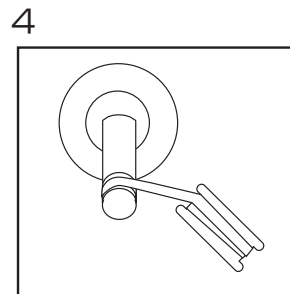
Oxygenics Evolution Instructions 1.0.E



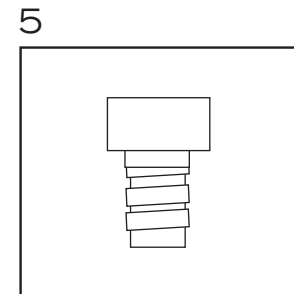
1 Retire la regadera existente.

2 Limpie profundamente el área roscada del brazo de ducha existente con un cepillo de metal o lana de acero.

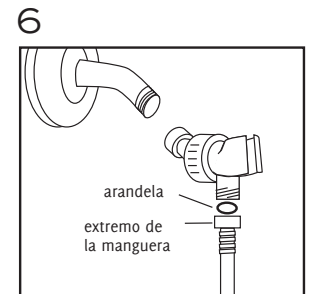
3 Drene la tubería de la ducha durante 5 a 10 segundos.



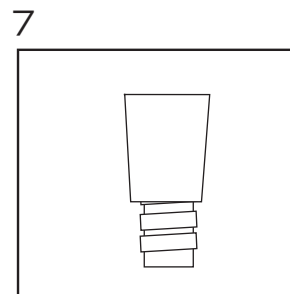
4 Coloque 3 vueltas hacia la derecha de cinta de teflón alrededor del extremo roscado del brazo de ducha.



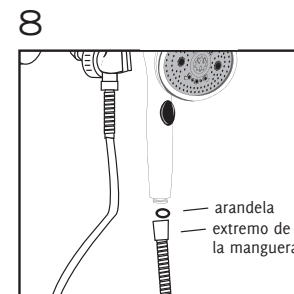
5 Localice el extremo de la manguera que se parece al de la imagen anterior.



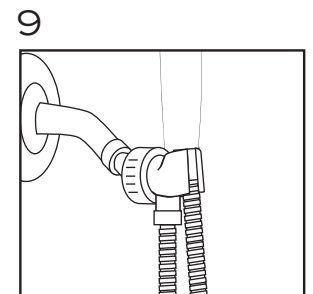
6 Atornille hacia la derecha el soporte de la regadera en la parte con cinta del brazo de la ducha. Si la arandela no se encuentra en la manguera, coloque la arandela en la extremo de la manguera y atornille la vara de la megadera.



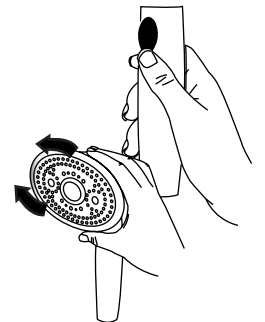
7 Localice el extremo de la manguera que se parece al de la imagen anterior. Este extremo es más largo y cónico.



8 Coloque una arandela en el extremo de la manguera y atornille la vara de la regadera. Si la arandela no se encuentra en la manguera, coloque la arandela en la extremo de la manguera y atornille la vara de la megadera.



9 Inserte la regadera en el soporte.



Fácil selección de rociado y ángulo ajustable

Disfrutar de diferentes tipos de rociado durante la ducha es rápido y sencillo con el botón de presión de Oxygenics Evolution. Simplemente presione el botón en el mango para cambiar rápidamente el tipo de chorro. Alterne entre rociados finos y rociados gruesos para disfrutar de la máxima experiencia de ducha con Oxygenics. Oxygenics Evolution ofrece además una cara ajustable de 360° que le permite orientarla en el ángulo que desee.